



What's New in Tāmaki Makaurau Auckland

July 2025

Introducing Auckland

Discover Auckland, New Zealand's largest and most diverse city, where sparkling waters, lush landscapes and city sophistication converge. World-class dining, shopping and luxurious accommodation are all within reach of water adventures on the Hauraki Gulf.

Explore what's new across our region and start planning your next adventure!



Table of contents

Accommodation:

In development:

1. [The Estate – Allpress Olive Groves](#)
2. [Double Tree by Hilton Albert Street](#)
3. [Radisson Red](#)
4. [TRIBE Auckland Fort Street – Accor](#)

Attractions & Activities:

1. [Auckland Surf Park](#)
2. [Terra and Tide – new Private Matakana tour product and vehicle fleet](#)
3. [Guided Nature Walk on Rotoroa Island – Explore Group](#)
4. [Waiheke Guide app](#)
5. [Velskov – Private Māori Dining](#)
6. [Luxury Airport Shuttles](#)
7. [All Blacks Experience – private tour and dinner with former All Blacks/ Black Fern legends](#)
8. [Dinosaur Discovery Track – Auckland Zoo](#)
9. [Westfield Newmarket Shuttle Service](#)
10. [A Century of Modern Art at Auckland Art Gallery Toi o Tāmaki](#)
11. [ExperienceKart – Matakana Art & Kiwi Classic Experience](#)
12. [Fullers360 – Electric Hydrofoil Experience](#)

Restaurant & Bar Openings:

1. [Mensa Wynyard](#)
2. [Blue](#)
3. [The Vault – Gilt Brasserie’s new private dining space](#)
4. [Bistro Saine](#)
5. [Takapuna Surf Club](#)
6. [Ground Wine Bar](#)
7. [Jacuzzi Ponsonby](#)
8. [Rothko at Sculptureum](#)

Upcoming Events – 2025/2026

Accommodation

Auckland's diverse accommodation ranges from international hotel brands and self-contained apartments to boutique lodges to suit any budget.



The Estate – Allpress Olive Groves

Opening January 2026



7



[The Estate – Allpress Olive Groves](#)



Church Bay, Waiheke Island

- Allpress Olive Groves' newest accommodation, The Estate, a stunning retreat where luxury meets nature on the sun soaked, west-facing slopes of Waiheke Island most converted coastline in Church Bay. With panoramic views over the Hauraki Gulf to the Auckland skyline, this 7-bedroom including two private suites estate is a private, peaceful sanctuary.
- The accommodation features a cozy lounge with a fireplace, an expansive dining area, and a media room—ideal for everything from quiet nights in to festive gatherings. It also includes a mezzanine reading room, office spaces, a private pool, spa, sauna, and an outdoor kitchen with a fireplace.



DoubleTree by Hilton Auckland Albert Street

Opening mid 2026



231



Coming soon



92 Albert Street, Auckland city centre

- DoubleTree by Hilton Auckland Albert Street is a 20-storey structure offering 231 spacious guest rooms, including two suites, 400 square meters of event and meeting space, a fitness centre as well as an all-day dining restaurant and bar.
- This property is located in the heart of Auckland's Central Business District, a stone's throw from Aotea train station and close to many of Auckland's most iconic landmarks and tourist attractions, including the Sky Tower and Auckland waterfront.
- The new-build hotel is also strategically located within walking distance of the upcoming New Zealand International Convention Centre.



Radisson RED Auckland

Opening Q4 2025



325



Coming soon



280 Queen Street & 33 Lorne Street, Auckland CBD

- Radisson RED, an innovative and trend-setting upper upscale hotel that will introduce 325 captivating and stylish rooms to cater to its discerning guests. 280 Queen Street also marks Radisson RED's debut in Asia-Pacific.
- The building sits across from the city's upcoming rail station, Aotea Station.
- The pinnacle of the project will be Auckland's largest rooftop bar named Reattach able Rooftop. With its generous floorplate and impeccable design, the main-event of the Rooftop Restaurant & Bar offering stands to be the grandest and most coveted venue in the inner-city metropolitan area.



TRIBE Auckland Fort Street - Accor

Opening 2025



60



[TRIBE Auckland Fort Street](#)



Fort Street, Auckland city centre

- TRIBE, the design-led midscale brand by Accor is set to open its doors this summer. TRIBE Auckland Fort Street will become the brand's first address in the country, serving as a stylish destination where guests and locals can work, play, and relax with a like-minded community of entrepreneurs and adventurous travellers.
- The hotel will bring a bold design edit to Auckland's hotel scene with 60 compact, yet ultra-comfy guestrooms featuring the latest technology, a lobby bar, terrace, and social hub.



Attractions & activities

With lively urban precincts and a stunning natural playground so close together, it's easy to hop from one adventure to the next. From sailing and dolphin spotting out on the water to the city's galleries, museums and exciting attractions, Auckland has all the ingredients for a perfect tailor-made holiday.



Auckland Surf Park

Opening late 2027



[Auckland Surf Park](#)



1350 Dairy Flat Highway, Auckland

- Backed by Sir John Kirwan and local iwi, Auckland Surf Park is set to become the world's first heated artificial surfing in Dairy Flat, just 20 minutes from Auckland CBD.
- Over 400 homes, a vibrant town centre, and a members-only surf clubhouse to join the core surf lagoon, data centre, solar farm and eco-cabins, and lodging accommodation, restaurants and public outdoor amenities including walking and cycling trails.
- At its heart: a 56-module Wavegarden “Cove” lagoon, with heated surf (world's first) powered by excess heat from an on-site, solar-powered Spark data centre.
- Sustainable by design: regenerative stream restoration, native planting, rain-water harvesting, no single-use plastics—and the lagoon's year-round warmth from data-centre heat recycling.



Terra and Tide – new Private Matakana tour product and vehicle fleet

Available now



Terra and Tide



Waiheke Island and Matakana

- Discover the charm of the Matakana Coast on Terra and Tide's newest private day tour. Wander the stunning trails of Tāwharanui Regional Park or the Mangawhai Coastal Walkway, explore local galleries and artisan delights in Matakana Village, and enjoy a winery lunch among the sculptures at Brick Bay. Tours run 9:30am–4:00pm from Matakana, with pickups available from Auckland CBD, Te Arai, and Matakana. Suitable for 2–12 guests.
- Terra and Tide has expanded its fleet with 4 new Mercedes eVito tour vehicles, 3 brand-new Mercedes Sprinters, and a Ford Transit. This summer, they'll be able to accommodate up to 72 guests per day on vehicle-based tours, alongside up to 30 guests on guided walks and 12 guests on their signature Waiheke Island sailing experience.
- See Terra and Tide retail pack document [here](#).



Guided Nature Walk on Rotoroa Island – Explore Group

Available now



[Explore Group – Rotoroa Island](#)



Explore Group booking kiosk, Viaduct Harbour, Auckland

- Enjoy a 75-minute cruise each way through Tikapa Moana, the Hauraki Gulf, to Rotoroa Island aboard Explore Group's premium fleet (Wednesday to Sunday), where, under the care of the Rotoroa Island Trust, this predator-free sanctuary since 2014 is now home to free-ranging native birds and wildlife thriving across its bush, fields, and shorelines.
- Book a 90-minute guided walk with an island ranger to learn about the conservation programme and species reintroduction, while spotting fungi brought to life by the recent autumn rains.
- During June and July 2025, kids go free with Explore Group – use promo code KIDSFREE25 when booking. Conditions apply.



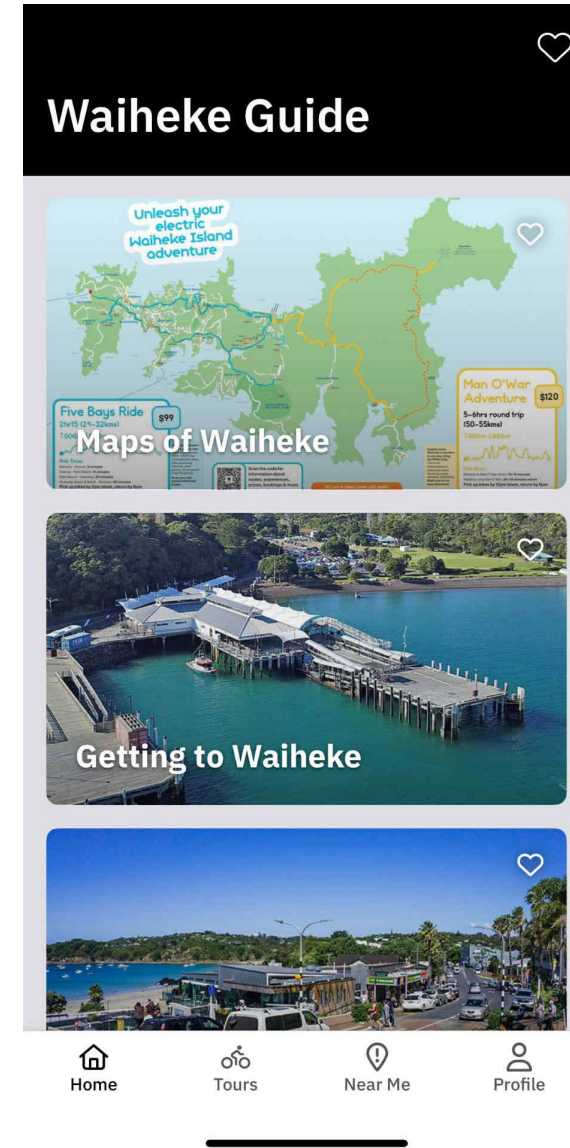
Waiheke Guide App (developed by eRide Waiheke)

Available now

 [eRide Waiheke](#)

 Waiheke Island

- Developed by the team behind eRide Waiheke, Waiheke Guide is a multilingual app, designed to be your personal guide to the island.
- Perfect for first time visitors and locals alike, the app features real-time ferry times, offline maps & local tips. Discover self-guided tours, top restaurants, local experiences, and the best things to see and do.
- Available on App Store and Android.



Velskov - Private Māori Dining Experience

Available now



[Velskov – Private Māori Dining](#)



Velskov Forest Farm, 627 Huia Road, Parau, Auckland

- Hine-rau-whārangī is a bespoke Māori-led eco-dining experience by Velskov, hosted in the heart of the Waitākere Ranges by Māori wahine Neria Brewerton, where guests forage native ingredients, craft teas, and share stories over an open-fire meal grounded in mātauranga Māori and deep respect for the whenua.
- Designed for intimate gatherings of up to 6 guests (or 12 by request), the five-hour experience includes optional Auckland CBD transfers and weaves cultural storytelling, hands-on cooking, and shared kai into a deeply meaningful encounter with Aotearoa's living culture.



Luxury Airport Shuttles

Available now



[Luxury Airport Shuttles](#)



Auckland

- Luxury Airport Shuttles delivers premium, door-to-door transport across Auckland. Services include private airport transfers, corporate travel, regional connections, and group transport for events or tours.
- With professional drivers, a modern fleet, and a focus on service, we make every journey seamless, comfortable, and reliably on time—day or night.



All Blacks Experience – private tour and dinner with former All Blacks/ Black Fern legends

Available now



[All Blacks Experience](#)



Level 4/88 Federal Street, Auckland Central

- Step into the heart of New Zealand rugby with an exclusive, player-hosted tour of the All Blacks Experience — led by a former All Black or Black Fern. This immersive journey is followed by a three-course dinner and drinks in the elegant private dining room of Metita, with your host joining throughout the evening.
- An unforgettable experience perfect for incentive groups, premium client hosting, or celebrating significant milestones in style.
- For more information, please contact reservations@experienceallblacks.com



Dinosaur Discovery Track – Auckland Zoo

Available now



[Dinosaur Discovery Track – Auckland Zoo](#)



Auckland Zoo, Motions Rd, Western Springs, Auckland

- Travel back in time on the Dinosaur Discovery Track to experience some of the awe-inspiring creatures that lived up to 250 million years ago, and learn about their connections with animals here at Auckland Zoo, and are helping to conserve in the wild.
- This immersive educational experience in the Zoo's former elephant habitat features 25 large-scale animatronic dinosaurs made by world-leading dinosaur creators, The Dinosaur Company.
- Dinosaur keeper talks available daily at 10.30am, 12.30pm, and 2.45pm



Westfield Newmarket Visitor Shuttle

7 June 2025 – 28 September 2025



Westfield Newmarket Visitor Shuttle



Auckland City pick up/drop off from bus stop 7005, in front of Commercial Bay, Auckland Central

- The Westfield Newmarket Visitors Shuttle announced a new complimentary 15 minute transport from Auckland City to Westfield Newmarket to enjoy all the centre has to offer.
- Free shuttle service with no bookings required.
- Seats available for up to 16 passengers, operating on a first-come, first-served basis
- Continual service throughout the day during scheduled hours as displayed on website.



A Century of Modern Art – Auckland Art Gallery Toi o Tāmaki



7 June 2025 – 28 September 2025

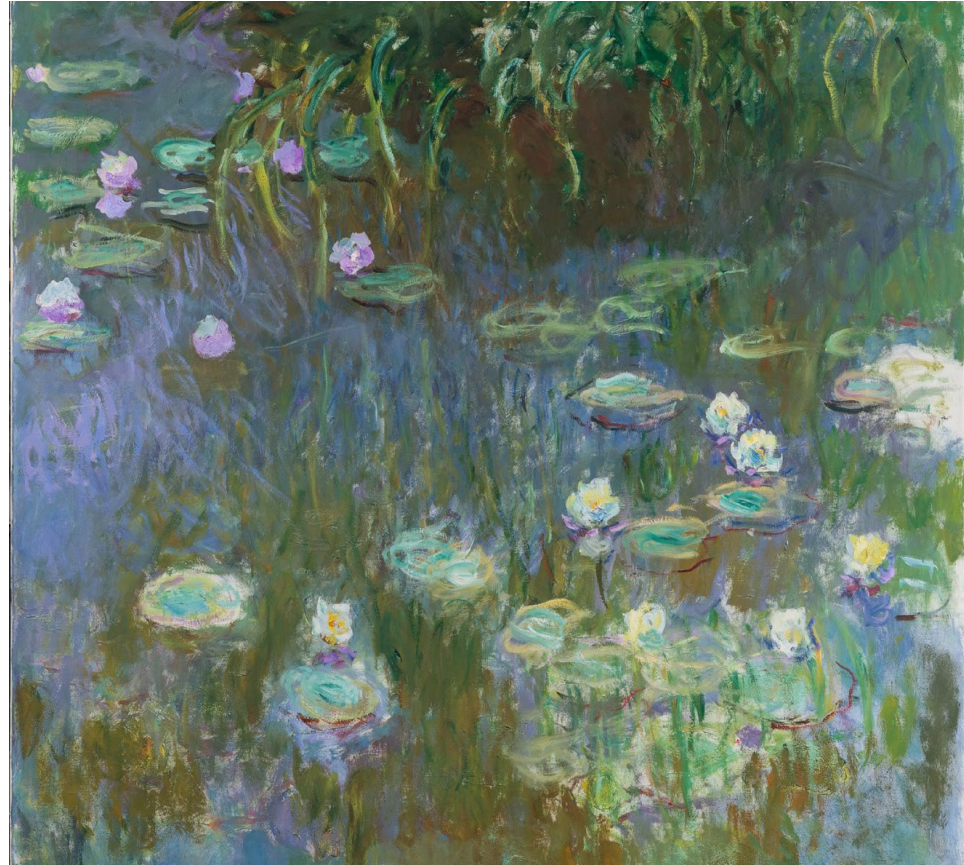


TBC



Auckland Art Gallery, Wellesley Street East, Auckland Central

- Auckland Art Gallery Toi o Tāmaki is pleased to announce A Century of Modern Art as its special winter exhibition this year.
- Be dazzled by the much-loved highlights of Ohio's Toledo Museum of Art's internationally-renowned collection, including 57 iconic works by 53 artists, such as Claude Monet, Edgar Degas and Vincent van Gogh, and premier examples by pioneering artists of the American and European avant-garde.
- Ticket prices and booking details will be announced shortly.



ExperienceKart

Matakana Art & Kiwi Classic Experience



Available now



[ExperienceKart – Matakana Art & Kiwi Classic Experience](#)



Pick up in Auckland City or Matakana

- Spend a day marvelling at unspoilt countryside on a round trip from Auckland, exploring riverside towns, and experiencing the enchanting world of Sculptureum, a mesmerising blend of art and nature.
- This is a sensory delight and tranquil escape for art enthusiasts and nature lovers. A chance to explore Matakana Village's art galleries, gift stores, fashion boutiques, and eateries. Indulge in a farm-to-table goodness at Matakana for a simple pleasure of relaxed dining. Savour fresh local produce and homely dining in a charming setting right by the Matakana River. Finally escape in the evening on a hands-on touring and some authentic Kiwi bird watching experience you'll never forget.



Fullers360 – Electric Hydrofoil Experience

Available now



[Fullers360 Electric Hydrofoil Experience](#)



Viaduct Harbour Marina, Auckland

- Take your Auckland adventure to the next level with the Electric Hydrofoil Experience. A first-in-the-world tourism offering, Kermadec is the fully electric, emissions-free, hydrofoiling ferry offering premium sustainable travel on the Hauraki Gulf.
- Glide effortlessly above the waves on your tour of Auckland's Waitematā Harbour while taking in panoramic views of the city skyline, Harbour Bridge and pristine waters of the Gulf. Hear the expert commentary from your crew, highlighting cutting-edge hydrofoiling technology and Auckland's vibrant marine environment.



Restaurant & bar openings



Mensa Wynyard

Opened June 2025

Opening time Monday - Friday: 7am – 3pm
 Saturday – Sunday: 8am – 3pm

 [Mensa Wynyard](#)

 124 Halsey Street, Auckland Central

Private dining No

- Mensa is a modern, Mediterranean-inspired eatery open seven days, set to breathe new life into the Wynyard Quarter corner of the waterfront.
- Mensa sits in one of the Quarter's most enviable positions — with wraparound harbour views. Taking its name from the Latin word for 'table', Mensa is built on the idea of shared connection — a place where food brings people together and community is at the core.




Blue

Opened May 2025

Opening time Wednesday - Friday: 7am – 11pm
 Sunday – Tuesday: Close



Blue

 1/1a Franklin Road, Ponsonby, Auckland

Private dining Yes

- A versatile daytime café and evening wine bar located in Ponsonby, Blue is designed to feel like an extension of home—laid-back yet elevated, with bright wooden floors, exposed brick, custom cabinets, a central dining area, generous communal tables, and a sunny courtyard that evokes a European vibe.
- Genuinely community-centric and seasonal, the menu shifts almost weekly, spotlighting hyper-local producers—think organic dairy in glass milk bottles, locally baked bread, and produce grown in community gardens—with breakfasts like silky egg buns and rice pudding, and evening small-plate dishes tailored for sharing.




The Vault

(Gilt Brasserie's new private dining space)

Opened May 2025

Opening time Monday – Saturday: 11.30am – 10pm
 Sunday: Close

 [The Vault at Gilt Brasserie](#)

 2 Chancery Chambers, Auckland central

Private dining No

- The Vault at Chancery Chambers —Gilt Brasserie's newest private dining space. The space is intimate, exclusive, and poised to become Auckland's most coveted spot for those in the know.
- Located discreetly behind Gilt's main dining room, The Vault is the Emmett's newest venture — a sumptuous, private dining room made for sophisticated soirées and intimate celebrations. With seating for 26 (or space for 45 for canapé style).



Bistro Saine

Opened April 2025

Opening time Monday - Friday: 6.30am – 10.30pm
 Saturday – Sunday: 6.30pm – 11pm

 [Bistro Saine](#)

 51 Albert Street, Auckland Central

Private dining No

- Nestled in heart of the Indigo Hotel on Albert Street, Bistro Saine is a new neighbourhood spot offering a French-meets-Mediterranean menu.
- The bistro draws inspiration from Europe's grand brasseries and the lively energy of New York, blending time-honoured techniques with contemporary creativity.
- Behind the concept is James Ingram, a leading Australian hospitality design consultant and Executive Chef Yutak Son, whose culinary pedigree includes Orphans Kitchen, Sidart, Black Estate, Te Motu, and Daily Bread.



Takapuna Surf Club

Opened March 2025

Opening time Sunday – Thursday: 12pm – 12am
 Friday – Saturday: 12pm – 1am

 [Takapuna Surf Club](#)

 111 Hurstmere Road, Takapuna, Auckland

Private dining No

- As a new venture by the hospitality collective behind Queens Rooftop & Wineshop, Takapuna Surf Club — an all-day bar and eatery, sits perched above Takapuna Beach, with sweeping views and multiple spots to catch the day's rays in the vibrant North Shore area, just 15 minute drive from Auckland Central.
- The expansive eatery also features a dedicated games area, featuring pinball, arcade machines, and high-tech dart lanes. DJ set is available every Saturday and Sunday.



Ground Wine Bar

Opened February 2025

Opening time Monday & Wednesday – Sunday: 3pm – 12am
 Tuesday: closed

 [Ground Wine Bar](#)

 10 O'Connell Street, Auckland Central

Private dining No

- Located beneath O'Connell Street in Auckland's CBD, Ground Wine Bar is a cozy, subterranean haven for wine enthusiasts. This intimate spot offers over 50 wines by the glass from around the world, including selections from renowned regions like Italy and Spain, as well as lesser-known gems from Lebanon and Peru.
- The bar features a warm atmosphere with soft blues and soul music, complemented by a simple yet delicious menu of charcuterie, cheeses, and other local specialties.



Jacuzzi Ponsonby (formerly known as SPQR)

Opened February 2025

Opening time Wednesday – Sunday: 12pm – 2am
 Monday – Tuesday: 12pm – 11pm

 [Jacuzzi Ponsonby](#)

 10 O'Connell Street, Auckland Central

Private dining No

- A new institution replaced the once iconic SPQR on Ponsonby Road. Jacuzzi channels the energy of Auckland's most vibrant, seductive suburb. From the familiar ivy-clad terrace spilling onto Ponsonby road, to the newly discovered sun-kissed rear atrium, Jacuzzi truly gives a nod to the past, while bringing exciting discovery of the new.
- Owned by the creators behind the successful Elmo's and Hoppers bar in Ponsonby, Jacuzzi showcases playful cocktails and a signature martini menu, local and international wine and beer, and an exceptional selection of champagne and dishes.



Rothko at Sculptureum

Re-opened February 2025

Opening time Lunch: Thursday — Sunday, 11am — 2pm
 Dinner: Thursday — Sunday, 6pm — 8pm

 [Rothko at Sculptureum](#)

 40 Omaha Flats Road, Matakana

Private dining Yes

- Under the creative direction of award-winning chef Neil Sapitula, Rothko at Sculptureum has reopened its doors, introducing a new kitchen designed around open-fire cooking and an intimate new chef's table experience of 'Fire and Ferment' — a culinary philosophy that speaks to Sapitula's Filipino roots, reverence for technique, and playful approach to bold flavours.
- Rothko is nestled within the striking grounds of Sculptureum, where more than 700 diverse sculptures and other artworks are displayed across the 10-acre site within quirky galleries and throughout stunning garden spaces.



Upcoming events



For more event information, visit [Discover Auckland website](#).

Events	Event dates
Nikki Glaser	17 July 2025
Midnight Synthony Full Metal Orchestra	27 July 2025
Heart of the City – Restaurant Month 2025	1 – 31 August 2025
New Zealand Fashion Week	26 – 30 August 2025
Tyler, The Creator	18 August 2025
All Blacks vs. South Africa	6 September 2025
Priscilla Queen of the Desert	12 September – 4 October 2025
All Blacks vs. Australia	27 September 2025
Lil Baby	16 October 2025
Ryan Adams	18 October 2025
James Blunt	21 October 2025
BNZ Auckland Diwali Festival	11 – 12 October 2025
2025 Corteo - Cirque du Soleil	30 October – 9 November 2025
Jimmy Carr	28 January 2026
ASB Classic	TBC
Mānuka Phuel Symthony Festival	TBC
BNZ Auckland Lantern Festival	February 2026
Pasifika Festival	March 2026

Fun Facts



In New Zealand's indigenous Māori language, Auckland is called Tāmaki Makaurau which means a 'place desired by many.'



Auckland's landscape is dotted with **53 volcanic cones**. The largest, youngest and most iconic is Rangitoto Island, which emerged from the water approximately 650 years ago.



Auckland is home to about **1.7 million people** – more than a third of New Zealand's population.



One of the few cities in the world bordered by **three harbours on two separate bodies of water** – The Pacific Ocean on the east coast and the Tasman Sea on the west coast.



Westhaven Marina, on the city's doorstep, is the **largest marina in the Southern Hemisphere**.



The Hauraki Gulf Marine Park encompasses an incredible area of **1.2 million hectares and more than 50 islands**. Many of them easily accessible by ferry from downtown Auckland, including Waiheke Island, Rangitoto Island and Tiritiri Matangi Island



Auckland is fortunate to enjoy one of the most diverse and unique music scenes in the world – so much so, that it's officially a **'UNESCO City Of Music'**.

Ngā mihi

Trade

Chris Hughes

Business Development Manager

Western Markets

Chris.Hughes@aucklandnz.com

Trade

Yamile Hernandez

Business Development Manager

Eastern Markets

Yamile.Hernandez@aucklandnz.com

Media

Rebecka Keeling

Communications Advisor

Rebecka.Keeling@aucklandnz.com

[Auckland Tourism Trade Website](#)

[Auckland Image Library](#)



Trade sellers, sign up to

[Auckland Tourism Trade Facebook Group](#)

