



What's New in Tāmaki Makaurau Auckland

October 2025

Introducing Auckland

Discover Auckland, New Zealand's largest and most diverse city, where sparkling waters, lush landscapes and city sophistication converge. World-class dining, shopping and luxurious accommodation are all within reach of water adventures on the Hauraki Gulf.

Explore what's new across our region and start planning your next adventure!



Table of contents

Accommodation:

In development:

1. [Moxy Auckland Hotel](#)
2. [The Estate – Allpress Olive Groves](#)
3. [JO & JOE Auckland](#)
4. [Double Tree by Hilton Albert Street](#)
5. [Radisson Red](#)
6. [TRIBE Auckland Fort Street – Accor](#)

Attractions & Activities:

1. [Auckland Surf Park](#)
2. [AJ Hackett newest products – SkyJump machine upgrade & SkyRide](#)
3. [Auckland Sea Kayaks - Kayak by Day: Kiwi by Night Tour](#)
4. [Allpress Olive Groves - Bistro, Tasting Room & Store and Events Centre](#)
5. [Westfield Newmarket - Complimentary visitor shuttles](#)
6. [Wero Climb](#)
7. [Auckland & Beyond Tour – Yonder Star Luxury Sailing](#)
8. [Cheeky Kiwi Travel](#)
9. [Terra and Tide – new Private Matakana tour product and vehicle fleet](#)
10. [Waiheke Guide app](#)
11. [Velskov – Private Māori Dining](#)

Restaurant & Bar Openings:

1. [Vivace Restaurant & Hotel DeBrett](#)
2. [Flush Golf & Bar Ziti](#)
3. [Éclair Studio](#)
4. [Pie & Pinot](#)
5. [Mensa Wynyard](#)
6. [Blue](#)
7. [The Vault – Gilt Brasserie’s new private dining space](#)
8. [Bistro Saine](#)

Upcoming Events – 2025/2026

Accommodation

Auckland's diverse accommodation ranges from international hotel brands and self-contained apartments to boutique lodges to suit any budget.



Moxy Auckland Hotel

Opening mid 2026



185



Coming soon



TBC

- Part of Marriott International's bold and playful Moxy brand, the new Auckland CBD property will be New Zealand's first high-rise modular hotel.
- Rising 16 storeys, it will showcase 185 cleverly designed, high-tech rooms that arrive fully finished as part of the modular build. True to Moxy's global DNA, the hotel is designed to attract the youth and young-at-heart market, featuring buzzing communal spaces, social bars, and entertainment zones.
- Guests will also enjoy a fitness centre, meeting rooms, and a lively lobby anchored by a communal table for co-working, connecting, or simply soaking up the atmosphere.



The Estate – Allpress Olive Groves

Opening January 2026



7



[The Estate – Allpress Olive Groves](#)



Church Bay, Waiheke Island

- Allpress Olive Groves' newest accommodation, The Estate, a stunning retreat where luxury meets nature on the sun soaked, west-facing slopes of Waiheke Island most converted coastline in Church Bay. With panoramic views over the Hauraki Gulf to the Auckland skyline, this 7-bedroom including two private suites estate is a private, peaceful sanctuary.
- The accommodation features a cozy lounge with a fireplace, an expansive dining area, and a media room—ideal for everything from quiet nights in to festive gatherings. It also includes a mezzanine reading room, office spaces, a private pool, spa, sauna, and an outdoor kitchen with a fireplace.



JO & JOE Auckland - Accor

Opening on 3 November 2025



63



[JO & JOE Auckland](#)



16 – 20 Fort Street, Auckland

- A dynamic new addition to Auckland's Fort Street precinct, scheduled to open in 2025, JO & JOE brings a hybrid hospitality concept that blends the energy of a hostel with the comfort of a hotel, offering an affordable and social stay experience.
- The property features 73 rooms with 308 bunk beds, designed to appeal to modern, social travellers. It includes lively communal spaces and a rooftop bar, creating spaces for interaction, events, and casual connection.
- JO & JOE in Auckland is part of Accor and Ennismore's broader Pacific growth strategy, signaling investment in lifestyle-driven, millennial-focused hospitality. It joins other new ventures like TRIBE Auckland and Fort Street openings designed to energise downtown Auckland's lodging offerings.



DoubleTree by Hilton Auckland Albert Street

Opening mid 2026



231

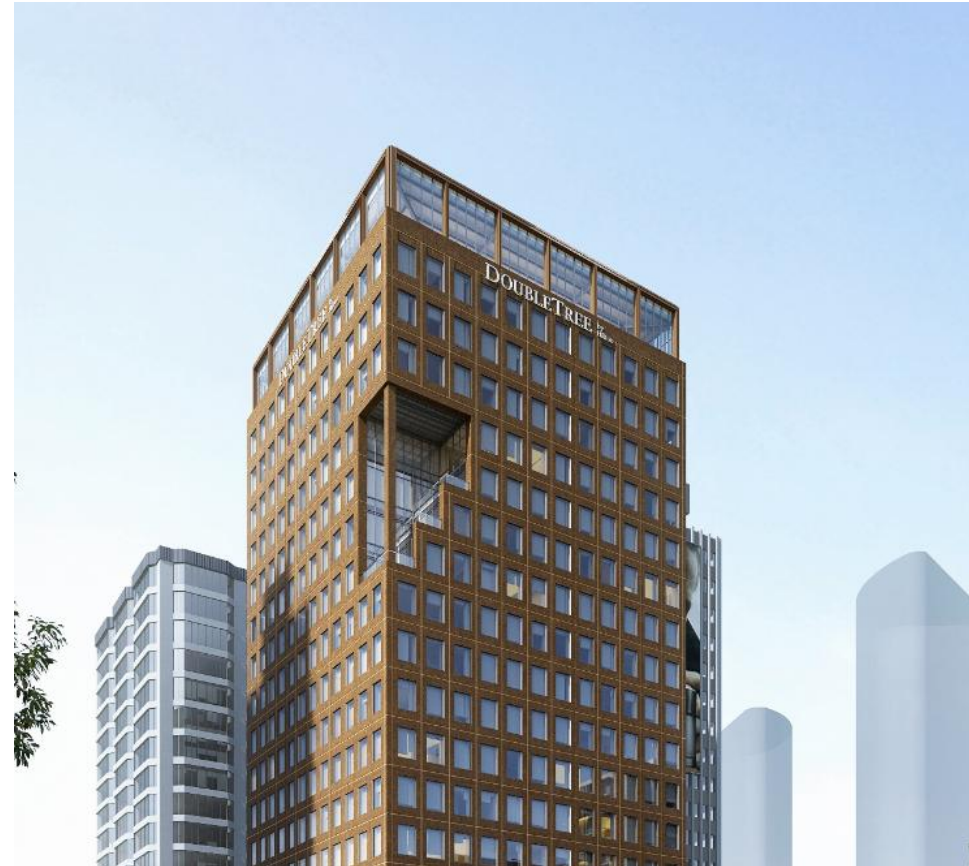


Coming soon



92 Albert Street, Auckland city centre

- DoubleTree by Hilton Auckland Albert Street is a 20-storey structure offering 231 spacious guest rooms, including two suites, 400 square meters of event and meeting space, a fitness centre as well as an all-day dining restaurant and bar.
- This property is located in the heart of Auckland's Central Business District, a stone's throw from Aotea train station and close to many of Auckland's most iconic landmarks and tourist attractions, including the Sky Tower and Auckland waterfront.
- The new-build hotel is also strategically located within walking distance of the upcoming New Zealand International Convention Centre.



Radisson RED Auckland

Opening Q4 2025



325



Coming soon



280 Queen Street & 33 Lorne Street, Auckland CBD

- Radisson RED, an innovative and trend-setting upper upscale hotel that will introduce 325 captivating and stylish rooms to cater to its discerning guests. 280 Queen Street also marks Radisson RED's debut in Asia-Pacific.
- The building sits across from the city's upcoming rail station, Aotea Station.
- The pinnacle of the project will be Auckland's largest rooftop bar named Reattach able Rooftop. With its generous floorplate and impeccable design, the main-event of the Rooftop Restaurant & Bar offering stands to be the grandest and most coveted venue in the inner-city metropolitan area.



TRIBE Auckland Fort Street - Accor

Opening on 14 October 2025



60



[TRIBE Auckland Fort Street](#)



Fort Street, Auckland city centre

- TRIBE, the design-led midscale brand by Accor is set to open its doors this summer. TRIBE Auckland Fort Street will become the brand's first address in the country, serving as a stylish destination where guests and locals can work, play, and relax with a like-minded community of entrepreneurs and adventurous travellers.
- The hotel will bring a bold design edit to Auckland's hotel scene with 60 compact, yet ultra-comfy guestrooms featuring the latest technology, a lobby bar, terrace, and social hub.



Attractions & activities

With lively urban precincts and a stunning natural playground so close together, it's easy to hop from one adventure to the next. From sailing and dolphin spotting out on the water to the city's galleries, museums and exciting attractions, Auckland has all the ingredients for a perfect tailor-made holiday.



Auckland Surf Park

Opening late 2027



[Auckland Surf Park](#)



1350 Dairy Flat Highway, Auckland

- Backed by Sir John Kirwan and local iwi, Auckland Surf Park is set to become the world's first heated artificial surfing in Dairy Flat, just 20 minutes from Auckland CBD.
- Over 400 homes, a vibrant town centre, and a members-only surf clubhouse to join the core surf lagoon, data centre, solar farm and eco-cabins, and lodging accommodation, restaurants and public outdoor amenities including walking and cycling trails.
- At its heart: a 56-module Wavegarden “Cove” lagoon, with heated surf (world's first) powered by excess heat from an on-site, solar-powered Spark data centre.
- Sustainable by design: regenerative stream restoration, native planting, rain-water harvesting, no single-use plastics—and the lagoon's year-round warmth from data-centre heat recycling.



AJ Hackett's newest products

SkyJump machine upgrade & SkyRide

Opening November 2025



Coming soon



72 Victoria Street West, Auckland Central

- AJ Hackett's SkyJump is undergoing an exciting upgrade, with the current machine being replaced by a new system that enables tandem jumps. While it still offers a controlled descent, the new machine will increase the speed to almost freefall, adding an extra thrill to the experience and allowing guests to jump alongside a friend for the first time.
- The big reveal is the brand-new SkyRide, launching soon at Sky Tower. This innovative attraction lifts you 190 metres into the air while seated in a harness, before rapidly lowering you back down for a smooth landing. Designed for both solo riders and pairs, SkyRide adds a bold new dimension to Auckland's adventure tourism offering.



Auckland Sea Kayaks

Kayak by Day: Kiwi by Night Tour

Available from 12 January 2026



[Auckland Sea Kayaks – 3 Day Coastal Mahurangi Adventure](#)



Start location: Information Kiosk at Sullivan's Bay, Mahurangi Regional Park

- Join Auckland Sea Kayaks on a 3-day adventure through Mahurangi Regional Park. Paddle stunning coastlines, explore sea caves, rock gardens and shipwrecks, and camp under the stars. Visit predator-free Motuora Island, home to rare native birds and wild kiwi.
- Limited to just nine guests, this summer-only expedition blends slow travel, nature, and adventure — an unforgettable way to connect with New Zealand's wild side.



Allpress Olive Groves - Bistro, Tasting Room & Store and Events Centre

Opening 1 October 2025

 [Allpress Olive Groves](#)

 Waiheke Island

- Allpress Olive Groves is excited to open a new Tasting Room on 1 October. The current tasting room will be open as usual at 56 Church Bay Road on Monday 29 September, closed on Tuesday 30 September for the move, and then reopening at the new location - 1 Gordons Road, Rocky Bay in October.
- Allpress Bistro will also be opened in October: a casual, informal bistro with a simple menu, grounded in generosity and flavour. Set among the groves, the bistro will be a warm, inviting space—bringing together great produce, thoughtful cooking, and good company. With a large courtyard and an outdoor pizza kitchen and bar, it'll be a space to relax, eat well, and feel at home.



Westfield Newmarket

Complimentary visitor shuttles

Available now



[Westfield Newmarket](#)



277 Broadway, Newmarket, Auckland

- Shop, dine, and explore in style with the complimentary Westfield Newmarket Visitors Shuttle. Running daily between SkyCity Auckland (outside the Sky Tower main entrance) and Westfield Newmarket, the 16-seat shuttle makes it easy to access Auckland's premier shopping, dining, and entertainment precinct.
- No bookings are required—simply hop on and enjoy the ride, complete with an onboard audio guide highlighting everything the centre has to offer.



Wero Climb

Opened July 2025



[Wero Climb](#)



770 Great South Road, Wiri, Auckland

- Wero Climb is located at 770 Great South Road in Manukau, Auckland, beside the Due Drop Events Centre and Wero Whitewater Park. This striking structure stands 16 metres tall and features 78 unique climbing elements, including trust jumps, pole walks, and a thrilling ‘walk the plank’, all engineered in Germany and built to international safety standards.
- Hosted up to 100 climbers at a time, the experience blends physical challenge with rich cultural storytelling, incorporating Māori mythology through features developed in collaboration with local Tainui iwi. Participants progress through various levels of difficulty, with both kids and adults able to choose between Adventure and Kids courses.



Auckland & Beyond Tours

Yonder Star Luxury Sailing

Available now

 [Yonder Star](#)



Departure location: Viaduct Harbour

- Set sail aboard Yonder Star, a beautifully restored 87-foot luxury ketch offering private cruises across Auckland's Hauraki Gulf, with flexible options including 3-hour harbour sails and full-day island adventures.
- Departing from Viaduct Harbour, the voyage showcases iconic sights like the Auckland Harbour Bridge, Devonport, Rangitoto, and Motuihe Island, with opportunities for swimming, kayaking, or paddleboarding.
- Ideal for both leisure and special events, Yonder Star accommodates 6–8 overnight guests or up to 30 for day charters, complete with Starlink WiFi, onboard catering, and stunning indoor-outdoor spaces.



Cheeky Kiwi Travel – Auckland Tours

Available now



[Cheeky Kiwi Travel](#)



Auckland

- Cheeky Kiwi Travel has recently launched two new small-group tours in Auckland. The half-day “City Highlights” tour (approx. 4 hours) showcases Auckland’s rich cultural heritage, major landmarks, and vibrant neighbourhoods. The “Wild West Coast & Black Sand Beaches” tour (approx. 5 hours) takes guests beyond the city to discover the dramatic coastline, native forests, and iconic black sand beaches.
- For those wanting the full experience, Cheeky Kiwi Travel offers the “Ultimate Auckland Experience”, a full-day tour (approx. 12 hours) that combines both city exploration and the wild west coast.
- All tours are conducted in small groups, with a maximum of around 16 passengers.



Terra and Tide – new Private Matakana tour product and vehicle fleet

Available now

[Terra and Tide](#)

Waiheke Island and Matakana

- Discover the charm of the Matakana Coast on Terra and Tide's newest private day tour. Wander the stunning trails of Tāwharanui Regional Park or the Mangawhai Coastal Walkway, explore local galleries and artisan delights in Matakana Village, and enjoy a winery lunch among the sculptures at Brick Bay. Tours run 9:30am–4:00pm from Matakana, with pickups available from Auckland CBD, Te Arai, and Matakana. Suitable for 2–12 guests.
- Terra and Tide has expanded its fleet with 4 new Mercedes eVito tour vehicles, 3 brand-new Mercedes Sprinters, and a Ford Transit. This summer, they'll be able to accommodate up to 72 guests per day on vehicle-based tours, alongside up to 30 guests on guided walks and 12 guests on their signature Waiheke Island sailing experience.
- See Terra and Tide retail pack document [here](#).



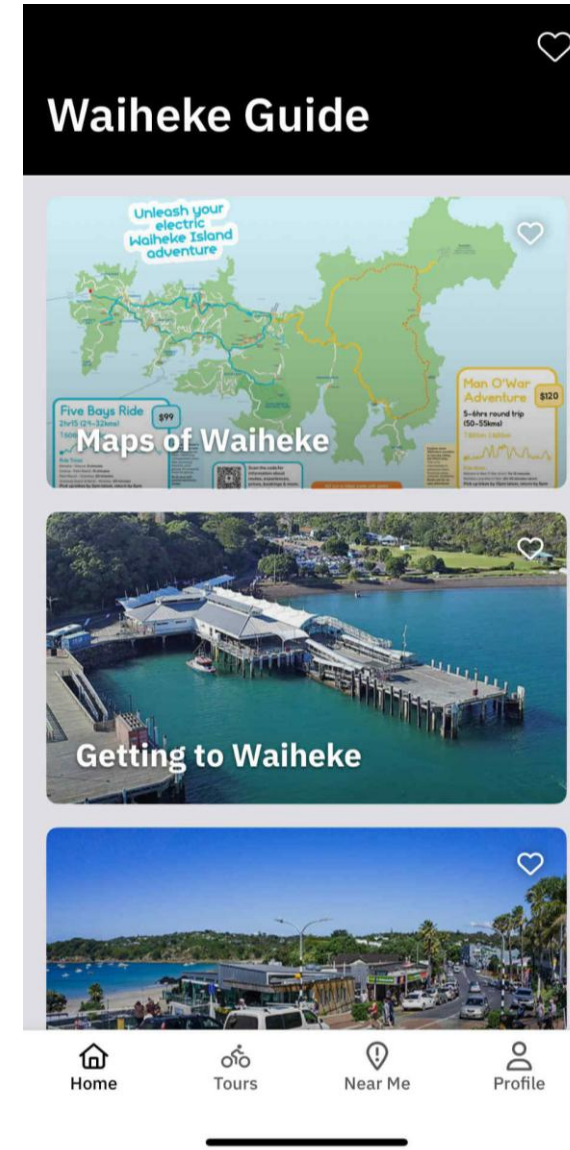
Waiheke Guide App (developed by eRide Waiheke)

Available now

 [eRide Waiheke](#)

 Waiheke Island

- Developed by the team behind eRide Waiheke, Waiheke Guide is a multilingual app, designed to be your personal guide to the island.
- Perfect for first time visitors and locals alike, the app features real-time ferry times, offline maps & local tips. Discover self-guided tours, top restaurants, local experiences, and the best things to see and do.
- Available on App Store and Android.



Velskov - Private Māori Dining Experience

Available now



[Velskov – Private Māori Dining](#)



Velskov Forest Farm, 627 Huia Road, Parau, Auckland

- Hine-rau-whārangī is a bespoke Māori-led eco-dining experience by Velskov, hosted in the heart of the Waitākere Ranges by Māori wahine Neria Brewerton, where guests forage native ingredients, craft teas, and share stories over an open-fire meal grounded in mātauranga Māori and deep respect for the whenua.
- Designed for intimate gatherings of up to 6 guests (or 12 by request), the five-hour experience includes optional Auckland CBD transfers and weaves cultural storytelling, hands-on cooking, and shared kai into a deeply meaningful encounter with Aotearoa's living culture.



Restaurant & bar openings



Vivace Restaurant & Hotel DeBrett

Opening 16 October 2025

Opening time 7am – 9pm weekdays
7.30am – 9pm weekends

 [Vivace Restaurant & Bar at DeBretts](#)

 3B O'Connell Street, Auckland Central

Private dining No

- Two Auckland icons have joined forces to redefine downtown dining. The much-loved Vivace Restaurant & Bar has moved into the elegant surrounds of Hotel DeBrett, bringing together decades of hospitality heritage under one roof.
- Opening October 16, this collaboration fuses Vivace's lively Mediterranean-inspired flair with the hotel's art-deco sophistication, creating a destination that feels both familiar and refreshingly new.
- Vivace Restaurant & Bar at DeBretts is located on Level 1 of Hotel DeBrett. For bookings and more information, visit Vivace's [website](#).



Flush Golf & Bar Ziti

Opened September 2025

Opening time Monday to Sunday - 11am - Late
No booking needed, walk-ins welcome.

 [Flush Golf & Bar Ziti](#)

 48 Custom Street East, Auckland CBD

Private dining No

- Hospitality and high-tech golf collide in Britomart with the launch of Flush Golf and Bar Ziti, two adjoining venues from Savor Group (behind Amano, Non Solo Pizza, and Bivacco).
- At Bar Ziti, guests can enjoy modern Italian fare, from wood-fired pizzas and hand-rolled pasta to playful cocktails and aperitivo hour, in a lively laneway setting.
- Right next door, Flush Golf brings world-class Trackman simulator technology to Auckland, offering memberships, private coaching with Marcus Wheelhouse, social leagues, and casual walk-ins.



Éclair Studio

Opened August 2025

Opening time Monday - Sunday: 9am - 6pm

 [Éclair Studio](#)

 279 Parnell Road, Parnell, Auckland

Private dining No

- Parnell's newest dining destination - Éclair Studio, a boutique pâtisserie where pastries are treated less like desserts and more like works of art. Enjoy each individual éclair that is meticulously handcrafted, balancing artistry with indulgence.
- Suitable for a quiet coffee break, a sweet gift to share, or a centerpiece for your next celebration.



Pie & Pinot

Opened June 2025

Opening time Wednesday – Sunday: 4pm – 11pm

 [Pie & Pinot](#)

 405 Remuera Road, Remuera, Auckland

Private dining No

- Nestled in the chic Remuera village, Pie & Pinot celebrates the humble pie elevated with finesse. Created by seasoned restaurateur Andrew Bell, the menu features eight rotating pie options, each paired with mash, gravy, and an optional wine or beer selection.
- Expect indulgent sides, hearty sausage options, family-sized pies, dessert pies, seasonal plates, handcrafted cocktails, and a curated wine list highlighting Pinot Gris and Pinot Noir. A fabulous spot to try upscale Kiwi pies!



Mensa Wynyard

Opened June 2025

Opening time Monday - Friday: 7am – 3pm
 Saturday – Sunday: 8am – 3pm

 [Mensa Wynyard](#)

 124 Halsey Street, Auckland Central

Private dining No

- Mensa is a modern, Mediterranean-inspired eatery open seven days, set to breathe new life into the Wynyard Quarter corner of the waterfront.
- Mensa sits in one of the Quarter's most enviable positions — with wraparound harbour views. Taking its name from the Latin word for 'table', Mensa is built on the idea of shared connection — a place where food brings people together and community is at the core.



Blue

Opened May 2025

Opening time Wednesday - Friday: 7am – 11pm
 Sunday – Tuesday: Close



[Blue](#)

 1/1a Franklin Road, Ponsonby, Auckland

Private dining Yes

- A versatile daytime café and evening wine bar located in Ponsonby, Blue is designed to feel like an extension of home—laid-back yet elevated, with bright wooden floors, exposed brick, custom cabinets, a central dining area, generous communal tables, and a sunny courtyard that evokes a European vibe.
- Genuinely community-centric and seasonal, the menu shifts almost weekly, spotlighting hyper-local producers—think organic dairy in glass milk bottles, locally baked bread, and produce grown in community gardens—with breakfasts like silky egg buns and rice pudding, and evening small-plate dishes tailored for sharing.




The Vault

(Gilt Brasserie's new private dining space)

Opened May 2025

Opening time Monday – Saturday: 11.30am – 10pm
 Sunday: Close

 [The Vault at Gilt Brasserie](#)

 2 Chancery Chambers, Auckland central

Private dining No

- The Vault at Chancery Chambers —Gilt Brasserie's newest private dining space. The space is intimate, exclusive, and poised to become Auckland's most coveted spot for those in the know.
- Located discreetly behind Gilt's main dining room, The Vault is the Emmett's newest venture — a sumptuous, private dining room made for sophisticated soirées and intimate celebrations. With seating for 26 (or space for 45 for canapé style).



Bistro Saine

Opened April 2025

Opening time Monday - Friday: 6.30am – 10.30pm
 Saturday – Sunday: 6.30pm – 11pm

 [Bistro Saine](#)

 51 Albert Street, Auckland Central

Private dining No

- Nestled in heart of the Indigo Hotel on Albert Street, Bistro Saine is a new neighbourhood spot offering a French-meets-Mediterranean menu.
- The bistro draws inspiration from Europe's grand brasseries and the lively energy of New York, blending time-honoured techniques with contemporary creativity.
- Behind the concept is James Ingram, a leading Australian hospitality design consultant and Executive Chef Yutak Son, whose culinary pedigree includes Orphans Kitchen, Sidart, Black Estate, Te Motu, and Daily Bread.



Upcoming events



For more event information, visit [Discover Auckland website](#).

Events	Event dates
Priscilla Queen of the Desert	12 September – 4 October 2025
All Blacks vs. Australia	27 September 2025
Lil Baby	16 October 2025
Ryan Adams	18 October 2025
James Blunt	21 October 2025
BNZ Auckland Diwali Festival	11 – 12 October 2025
2025 Corteo - Cirque du Soleil	30 October – 9 November 2025
Barfoot & Thompson Auckland Marathon	2 November 2025
Doja Cat	18 November 2025
Lenny Kravitz	15 November 2025
Jimmy O. Yang	1 December 2025
Lewis Capaldi	2 December 2025
Ed Sheeran Loop Tour	21 January 2026
Jimmy Carr	28 January 2026
ASB Classic	5 – 17 January 2026
Matt Rife Comedy Show	17 January 2026
Mānuka Phuel Symthony Festival	TBC
Laneway Festival 2026	5 February 2026
BNZ Auckland Lantern Festival	26 February – 1 March 2026
Lorde Concert	11 February 2026
The Royal Edinburgh Military Tattoo	19 -21 February 2026
Ocean Alley	27 February 2026
Pasifika Festival	14 – 15 March 2026
SYNTHONY Festival 2026	21 March 2026
Machine Gun Kelly	18 April 2026

Fun Facts



In New Zealand's indigenous Māori language, Auckland is called Tāmaki Makaurau which means a 'place desired by many.'



Auckland's landscape is dotted with **53 volcanic cones**. The largest, youngest and most iconic is Rangitoto Island, which emerged from the water approximately 650 years ago.



Auckland is home to about **1.7 million people** – more than a third of New Zealand's population.



One of the few cities in the world bordered by **three harbours on two separate bodies of water** – The Pacific Ocean on the east coast and the Tasman Sea on the west coast.



Westhaven Marina, on the city's doorstep, is the **largest marina in the Southern Hemisphere**.



The Hauraki Gulf Marine Park encompasses an incredible area of **1.2 million hectares and more than 50 islands**. Many of them easily accessible by ferry from downtown Auckland, including Waiheke Island, Rangitoto Island and Tiritiri Matangi Island



Auckland is fortunate to enjoy one of the most diverse and unique music scenes in the world – so much so, that it's officially a **'UNESCO City Of Music'**.

Ngā mihi

Trade

Chris Hughes

Business Development Manager

Western Markets

Chris.Hughes@aucklandnz.com

Trade

Yamile Hernandez

Business Development Manager

Eastern Markets

Yamile.Hernandez@aucklandnz.com

Media

Rebecka Keeling

Communications Advisor

Rebecka.Keeling@aucklandnz.com

[Auckland Tourism Trade Website](#)

[Auckland Image Library](#)



Trade sellers, sign up to

[Auckland Tourism Trade Facebook Group](#)