



What's New in Tāmaki Makaurau Auckland

June 2026

Introducing Auckland

Discover Auckland, Aotearoa New Zealand's largest and most diverse city, where sparkling waters, lush landscapes and city sophistication converge.

World-class dining, shopping and luxurious accommodation are all within reach of water adventures on the Hauraki Gulf.

Explore what's new across our region and start planning your next adventure!

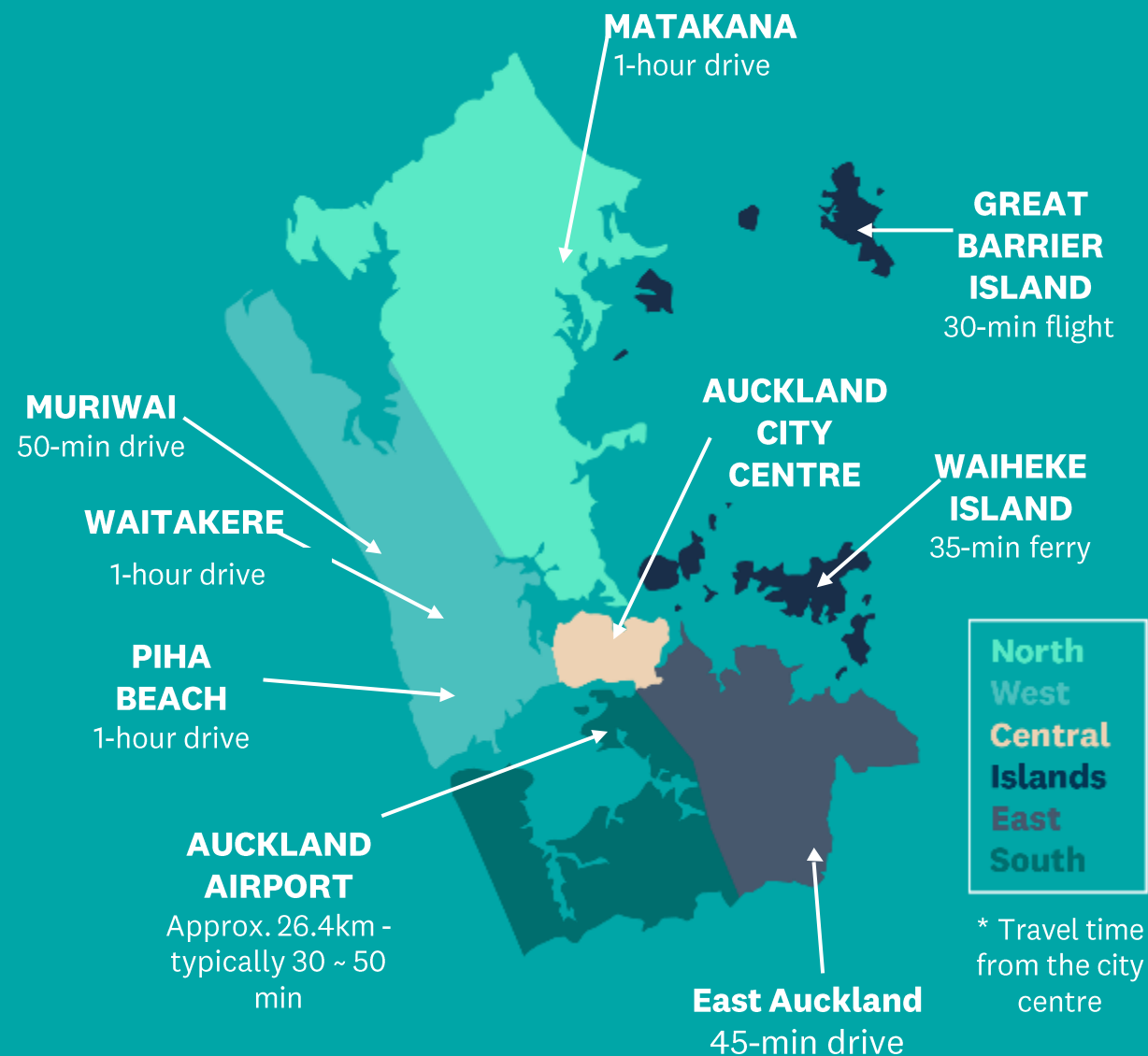


Table of contents

Accommodation:

In development:

1. [The Estate – Allpress Olive Groves](#)
2. [JO & JOE Auckland](#)
3. [Double Tree by Hilton Albert Street](#)
4. [Radisson Red](#)
5. [TRIBE Auckland Fort Street – Accor](#)
6. [Oaks Auckland Hotel \(formerly known as Nesuto Stadium Hotel and Apartments\)](#)

Attractions & Activities:

1. [Waiheke Eastern Explorer Tour](#)
2. [Te Arai Spa](#)
3. [Auckland Sea Kayaks – Kayak by Day Kiwi by Night Tour](#)
4. [Auckland Sea Kayaks – Rangitoto Guided Tour](#)
5. [Westfield Newmarket - Complimentary visitor shuttles](#)
6. [Allpress Olive Groves - Bistro, Tasting Room & Store and Events Centre](#)
7. [The Big Food Foodie Tour – Ponsonby Road](#)
8. [Wero Climb](#)
9. [Auckland & Beyond Tour – Yonder Star Luxury Sailing](#)
10. [Cheeky Kiwi Travel](#)
11. [Terra and Tide – New private Matakana tour product and vehicle fleet](#)
12. [The Heke – Golf Stimulator](#)
13. [Waiheke Guide app](#)
14. [Velskov – Private Māori Dining](#)
15. [Luxury Airport Shuttles](#)

Restaurant & Bar Openings:

1. [Aka Rooftop](#)
2. [Aarth](#)
3. [Éclair Studio](#)
4. [Pie & Pinot](#)
5. [Mensa Wynyard](#)
6. [Blue](#)
7. [The Vault – Gilt Brasserie’s new private dining space](#)
8. [Bistro Saine](#)
9. [Takapuna Surf Club](#)

Major Developments:

1. [Faradays Department Store](#)
2. [City Rail Link](#)
3. [NZICC](#)
4. [The Symphony Centre](#)
5. [Te Waharoa](#)
6. [Auckland Airport Upgrades](#)

Accommodation

Auckland's diverse accommodation ranges from international hotel brands and self-contained apartments to boutique lodges to suit any budget.



The Estate – Allpress Olive Groves

Opened January 2026



 [The Estate – Allpress Olive Groves](#)

 Church Bay, Waiheke Island

- Allpress Olive Groves' newest accommodation, The Estate, a stunning retreat where luxury meets nature on the sun soaked, west-facing slopes of Waiheke Island's most coveted coastline in Church Bay. With panoramic views over the Hauraki Gulf to the Auckland skyline, this 7-bedroom (including two private suites) estate is a private, peaceful sanctuary.
- The accommodation features a cozy lounge with a fireplace, an expansive dining area, and a media room—ideal for everything from quiet nights in, to festive gatherings. It also includes a mezzanine reading room, office spaces, a private pool, spa, sauna, and an outdoor kitchen with a fireplace.



JO & JOE Auckland - Accor

Opened November 2025

 73

 [JO & JOE Auckland](#)

 16 – 20 Fort Street, Auckland

- A dynamic new addition to Auckland’s Fort Street precinct has now opened, JO & JOE brings a hybrid hospitality concept that blends the energy of a hostel with the comfort of a hotel, offering an affordable and social stay experience.
- The property features 73 rooms with 308 bunk beds, designed to appeal to modern, social travellers. It includes lively communal spaces and a rooftop bar, creating spaces for interaction, events, and casual connection.
- JO & JOE in Auckland is part of Accor and Ennismore’s broader Pacific growth strategy, signaling investment in lifestyle-driven, millennial-focused hospitality. It joins other new ventures like TRIBE Auckland and Fort Street openings designed to energise downtown Auckland’s lodging offerings.



DoubleTree by Hilton Auckland Albert Street

Opening February 2027

 231



Coming soon



92 Albert Street, Auckland city centre

- DoubleTree by Hilton Auckland Albert Street is a 20-storey structure offering 231 spacious guest rooms, including two suites, 400 square metres of event and meeting space, a fitness centre as well as an all-day dining restaurant and bar.
- This property is located in the heart of Auckland's city centre and just a short stroll from both the Sky Tower and Auckland waterfront.
- The new-build hotel is conveniently located within walking distance of the New Zealand International Convention Centre.



Raddison RED Auckland

Now open

 325

 [Radisson RED](#)

 280 Queen Street & 33 Lorne Street, Auckland CBD

- Raddison RED, an innovative and trend-setting upper upscale hotel that will introduce 325 captivating and stylish rooms to cater to its discerning guests. 280 Queen Street also marks Radisson RED's debut in Asia-Pacific.
- The building sits across from the city's upcoming [city rail link](#).
- The pinnacle of the project is Auckland's largest rooftop bar . With its generous floorplate and impeccable design, the main- event of the Rooftop Restaurant & Bar offering stands to be the grandest and most coveted venue in the inner-city metropolitan area.



TRIBE Auckland Fort Street - Accor

Opened November 2025



60



[TRIBE Auckland Fort Street](#)



Fort Street, Auckland city centre

- TRIBE Auckland Fort Street is the brand's first address in the country, serving as a stylish destination where guests and locals can work, play, and relax with a like-minded community of entrepreneurs and adventurous travellers.
- The hotel brings a bold design edit to Auckland's hotel scene with 60 compact, yet ultra-comfy guestrooms featuring the latest technology, a lobby bar, terrace, and social hub.



Oaks Auckland Hotel (formerly known as Nesuto Stadium Hotel and Apartments)

Now open

 244



[Oaks Auckland Hotel](#)



40 Beach Road, Auckland City

- Oaks Auckland Hotel has officially joined the Minor Hotels portfolio, rebranding from the former Nesuto Stadium Hotel and Apartments through a long-term partnership with Mulpha International. The 244-room property is strategically located near Spark Arena, Britomart, and Auckland's waterfront, supporting Minor Hotels' regional expansion.
- Following a \$13 million refurbishment in 2020, the hotel offers modern rooms, studios, and self-contained apartments for both short and long stays. A new all-day dining venue, DASH, serves a-la-carte classics and locally inspired dishes, complemented by features like a co-working lobby, barista coffee, and grab-and-go pantry.



Attractions & activities

With lively urban precincts and a stunning natural playground so close together, it's easy to hop from one adventure to the next. From sailing and dolphin spotting out on the water to the city's galleries, museums and exciting attractions, Auckland has all the ingredients for a perfect tailor-made holiday.



Waiheke Eastern Explorer Tour



[Fullers360](#)



Waiheke Island

- Fullers360 brings you a new premium tour showcasing Waiheke's Eastern end.
- Enjoy a tasting of locally crafted gin or vodka at the Waiheke Distilling Company, followed by a delicious two-course lunch accompanied by a glass of wine at Man O' War Vineyards. Complete your experience with a boutique wine tasting at Jasper Ridge Estate before making your way back from your final stop.



Te Arai Links Spa



[Te Arai Links Spa](#)



11 Te Ara Whenua Miharo Kotiti, Tomarata 0975, New Zealand


- Te Arai Links has announced the opening of its new Spa and Fitness Centre, welcoming resort guests and members from December 2025, with public access from 2026. Designed as a sanctuary for relaxation and restoration, the facility includes a full-service spa, 24/7 fitness centre and hydrotherapy garden. The spa offers bespoke treatments using Australian naturaceutical brand Vanessa Megan and New Zealand botanicals from Raaie, alongside advanced therapies such as red-light and cryotherapy. The hydrotherapy garden features sauna, cold plunge, jacuzzies and outdoor relaxation areas, while the fitness centre is equipped with premium Technogym equipment.



Auckland Sea Kayaks

Kayak by Day: Kiwi by Night Tour

[Auckland Sea Kayaks - 3 Day Coastal Mahurangi Adventure](#)

-  Start location: Information Kiosk at Sullivan's Bay, Mahurangi Regional Park
- Join Auckland Sea Kayaks on a three-day adventure through Mahurangi Regional Park. Paddle stunning coastlines, explore sea caves, rock gardens and shipwrecks, and camp under the stars. Visit predator free Motuora Island, home to rare native birds and wild Kiwi.
- Limited to just nine guests, this summer-only expedition blends slow travel, nature, and adventure — an unforgettable way to connect with New Zealand's wild side.



Auckland Sea Kayaks : Guided Rangitoto Walks



[Auckland Sea Kayaks](#)



[Westhaven Marina](#)

- Introducing a new product by Auckland Sea Kayaks : Guided Rangitoto Walks. Guests join an experienced local guide to explore Rangitoto on foot, with each walk tailored to the group's pace, interests, and abilities. Along the way, guides bring the island to life through engaging storytelling about its volcanic geology, conservation efforts, and rich cultural history. The journey to the summit rewards visitors with panoramic 360-degree views across Auckland and the Hauraki Gulf, alongside the opportunity to explore dramatic lava tube formations using headlamps - a standout, immersive highlight.



Westfield Newmarket Complimentary visitor shuttles

 [Westfield Newmarket](#)

 277 Broadway, Newmarket, Auckland

- Shop, dine, and explore in style with the complimentary Westfield Newmarket Visitors Shuttle. Running daily between SkyCity Auckland (outside the Sky Tower main entrance) and Westfield Newmarket, the 16-seat shuttle makes it easy to access Auckland's premier shopping, dining, and entertainment precinct.
- No bookings are required — simply hop on and enjoy the ride complete with an onboard audio guide highlighting everything the centre has to offer.



Allpress Olive Groves - Bistro, Tasting Room & Store and Events Centre



[Allpress Olive Groves](#)



Waiheke Island

- Allpress Olive Groves is excited to open a new Tasting Room that's now open for bookings at its new location - 1 Gordons Road, Rocky Bay.
- Allpress Bistro has now also opened: a casual, informal bistro with a simple menu, grounded in generosity and flavour. Set among the groves, the bistro will be a warm, inviting space—bringing together great produce, thoughtful cooking, and good company. With a large courtyard and an outdoor pizza kitchen and bar, it'll be a space to relax, eat well, and feel at home.



The Big Food Foody Tour The Ponsonby Road Food Tour



[The Big Foody Food Tour](#)



[Ponsonby Tour](#)

- A three-hour walking experience by The Big Foody, showcasing Ponsonby's vibrant food culture, boutique fashion, and sensory delights. Small group format (max 10 people) for an intimate, immersive experience.
- Guests enjoy artisan ice cream, Italian and Asian-inspired dishes, and Ponsonby classics while meeting passionate local creators. Operates Tuesday-Saturday, 11am-2pm; \$225 per person (all tastings included). More info: thebigfoody.com.



Wero Climb

Wero Climb

770 Great South Road, Wiri, Auckland

- Wero Climb is located at 770 Great South Road in Manukau, Auckland, beside the Due Drop Events Centre and Wero Whitewater Park. This striking structure stands 16 metres tall and features 78 unique climbing elements, including trust jumps, pole walks, and a thrilling ‘walk the plank’, all engineered in Germany and built to international safety standards.
- Hosting up to 100 climbers at a time, the experience blends physical challenge with rich cultural storytelling, incorporating Māori mythology through features developed in collaboration with local Tainui iwi. Participants progress through various levels of difficulty, with both kids and adults able to choose between Adventure and Kids courses.



Auckland & Beyond Tours

Yonder Star Luxury Sailing

From January 2026

 [Yonder Star](#)

 **Departure location: Viaduct Harbour**

- Set sail aboard Yonder Star, a beautifully restored 87-foot luxury ketch offering private cruises across Auckland's Hauraki Gulf, with flexible options including 3-hour harbour sails and full-day island adventures.
- Departing from Viaduct Harbour, the voyage showcases iconic sights like the Auckland Harbour Bridge, Devonport, Rangitoto, and Motuihe Island, with opportunities for swimming, kayaking, or paddleboarding.
- Ideal for both leisure and special events, Yonder Star accommodates 6–8 overnight guests or up to 30 for day charters, complete with Starlink WiFi, onboard catering, and stunning indoor-outdoor spaces.



Cheeky Kiwi Travel – Auckland Tours



[Cheeky Kiwi Travel](#)



Auckland

- Cheeky Kiwi Travel has recently launched two new small-group tours in Auckland. The half-day “City Highlights” tour (approx. 4 hours) showcases Auckland’s rich cultural heritage, major landmarks, and vibrant neighbourhoods. The “Wild West Coast & Black Sand Beaches” tour (approx. 5 hours) takes guests beyond the city to discover the dramatic coastline, native forests, and iconic black sand beaches.
- For those wanting the full experience, Cheeky Kiwi Travel offers the “Ultimate Auckland Experience”, a full-day tour (approx. 12 hours) that combines both city exploration and the wild west coast.
- All tours are conducted in small groups, with a maximum of around 16 passengers.



Terra and Tide – new private Matakana tour product and vehicle fleet

Terra and Tide

Waiheke Island and Matakana

- Discover the charm of the Matakana Coast on Terra and Tide’s newest private day tour. Wander the stunning trails of Tāwharanui Regional Park or the Mangawhai Coastal Walkway, explore local galleries and artisan delights in Matakana Village, and enjoy a winery lunch among the sculptures at Brick Bay. Tours run 9:30am–4:00pm from Matakana, with pickups available from Auckland city centre, Te Arai, and Matakana. Suitable for 2–12 guests.
- Terra and Tide has expanded its fleet with four new Mercedes eVito tour vehicles, three brand-new Mercedes Sprinters, and a Ford Transit. This summer, they’ll be able to accommodate up to 72 guests per day on vehicle-based tours, alongside up to 30 guests on guided walks and 12 guests on their signature Waiheke Island sailing experience.



The Heke – Golf Simulator



[The Heke – Golf Simulator](#)



The Heke, 64 Onetangi Road, Onetangi, Waiheke Island

- Located on Waiheke Island, The Heke’s custom-built Golf Centre features two state-of-the-art golf simulator bays, “West” (to the left) and “East,” designed for undercover, all-weather play. Each bay accommodates up to four players and offers access to virtual courses, driving ranges, and interactive games.
- Session duration is 55 minutes, starting on the hour every hour. For maximum play time and safety the venue limits players to 4 per bay, although there are golf play options available for larger groups, with available tailored food and drink packages.



Waiheke Guide App (developed by eRide Waiheke)

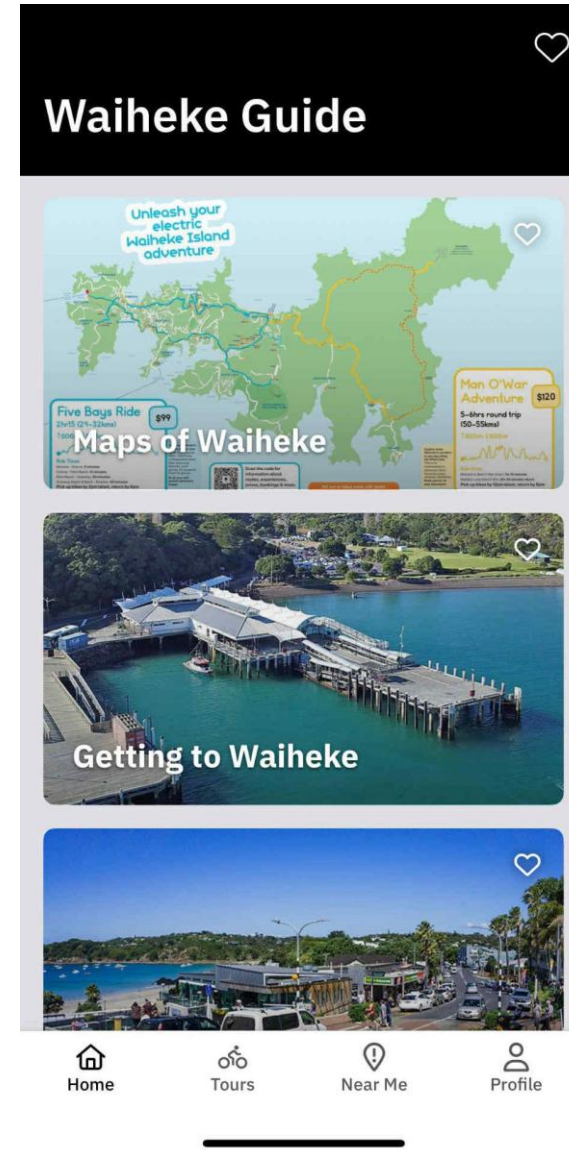


[eRide Waiheke](#)



[Waiheke Island](#)

- Developed by the team behind eRide Waiheke, Waiheke Guide is a multilingual app, designed to be your personal guide to the island.
- Perfect for first time visitors and locals alike, the app features real-time ferry times, offline maps & local tips. Discover self-guided tours, top restaurants, local experiences, and the best things to see and do.
- Available on App Store and Android.



Velskov - Private Māori Dining Experience

Available now

 [Velskov - Private Māori Dining](#)

 [Velskov Forest Farm, 627 Huia Road, Parau, Auckland](#)

- Hine-rau-whārangī is a bespoke Māori-led eco-dining experience by Velskov, hosted in the heart of the Waitākere Ranges where guests forage native ingredients, craft teas, and share stories over an open-fire meal grounded in mātauranga Māori and deep respect for the whenua.
- Designed for intimate gatherings of up to six guests (or 12 by request), the five-hour experience includes optional Auckland city centre transfers and weaves cultural storytelling, hands-on cooking, and shared kai into a deeply meaningful encounter with the living culture of Aotearoa.



Luxury Airport Shuttles

Available now



[Luxury Airport Shuttles](#)



Auckland

- Luxury Airport Shuttles delivers premium, door-to-door transport across Auckland. Services include private airport transfers, corporate travel, regional connections, and group transport for events or tours.
- With professional drivers, a modern fleet, and a focus on service, we make every journey seamless, comfortable, and reliably on time—day or night.



Forever Tomorrow : Chinese Art Now

02 May – 23 August 2026



[Auckland Art Gallery](#)



[1 Kitchener Street](#)

- *Forever Tomorrow: Chinese Art Now* presents fresh takes on traditional Chinese crafts, imposing robotic sculptures and meditative digital landscapes. This exhibition reveals the complexity, innovation and bold vision of Chinese art today, inviting you to discover a dynamic and ever-evolving cultural landscape.
- The exhibition features a powerful selection of works from international heavyweights including Ai Weiwei, Xu Bing, Xu Zhen and Yang Fudong, alongside stunning pieces by cutting-edge artists making their New Zealand debut, including Lu Yang, Zhang Peili and 2024 Sigg Prize Winner Wang Tuo.



Restaurant & bar openings



Aka Rooftop Bar

Opened April 2026

Opening time Monday - Sunday: 12pm-12am



 33 Lorne Street, Auckland Central

Private dining No

- Perched on the 15th floor, Aka Rooftop holds the title of New Zealand's largest open-air terrace, offering an unmatched vantage point over Auckland. From the towering heights of the Sky Tower to the sparkling waters of the Harbour and the greenery of Albert Park, the panoramic views are second to none.
- It is the city's premier destination for any occasion—whether you are catching up over after-work drinks, celebrating with friends, or hosting an exclusive private event. Settle in and soak up the atmosphere while enjoying a curated selection of cocktails and vibrant, bold Pan-Asian cuisine. Experience the very best of Auckland's social scene from high above the heart of the city centre.



Aarth

Opened February 2026

Opening time Wednesday - Sunday: 5-10pm



[Aarth](#)

 1/333 Parnell Road, Parnell

Private dining No

- Welcome to AARTH, where the vibrant hum of Parnell meets the soulful notes of India in a culinary overture. This isn't just a dining spot; it's a journey into the heart of Indian flavours reimagined. Under the expert guidance of Chef Vinayak Shah, AARTH transforms heritage Indian ingredients into a tapestry of tastes, offering an intriguing blend that's both nostalgic and utterly innovative. As the aromatic spices weave through the air, each dish unfolds like a story, inviting you to savour every moment and discover hidden nuances.




Éclair Studio

Now open

Opening time Monday - Sunday: 9am - 6pm

 [Éclair Studio](#)

 279 Parnell Road, Parnell, Auckland

Private dining No

- Parnell's newest dining destination - Éclair Studio, a boutique pâtisserie where pastries are treated less like desserts and more like works of art. Enjoy each individual éclair that is meticulously handcrafted, balancing artistry with indulgence.
- Suitable for a quiet coffee break, a sweet gift to share, or a centerpiece for your next celebration.



Pie & Pinot

Now open

Opening time Wednesday – Sunday: 4pm – 11pm

 [Pie & Pinot](#)

 405 Remuera Road, Remuera, Auckland

Private dining No

- Nestled in the chic Remuera village, Pie & Pinot celebrates the humble pie elevated with finesse. Created by seasoned restaurateur Andrew Bell, the menu features eight rotating pie options, each paired with mash, gravy, and an optional wine or beer selection.
- Expect indulgent sides, hearty sausage options, family-sized pies, dessert pies, seasonal plates, handcrafted cocktails, and a curated wine list highlighting Pinot Gris and Pinot Noir. A fabulous spot to try upscale Kiwi pies!



Mensa Wynyard

Now open

Opening time Monday - Friday: 7am – 3pm
Saturday – Sunday: 8am – 3pm

 [Mensa Wynyard](#)

 124 Halsey Street, Auckland Central

Private dining No

- Mensa is a modern, Mediterranean-inspired eatery open seven days, set to breathe new life into the Wynyard Quarter corner of the waterfront.
- Mensa sits in one of the Quarter’s most enviable positions — with wraparound harbour views. Taking its name from the Latin word for ‘table’, Mensa is built on the idea of shared connection — a place where food brings people together and community is at the core.



The Vault

(Gilt Brasserie's new private dining space)

Opening time Monday – Saturday: 11.30am – 10pm
 Sunday: Closed

 [The Vault at Gilt Brasserie](#)

 2 Chancery Chambers, Auckland central

Private dining

- The Vault at Chancery Chambers —Gilt Brasserie's newest private dining space. The space is intimate, exclusive, and poised to become Auckland's most coveted spot for those in the know.
- Located discreetly behind Gilt's main dining room, The Vault is the Emmett's newest venture — a sumptuous, private dining room made for sophisticated soirées and intimate celebrations. With seating for 26 (or space for 45 for canapé style).



Takapuna Surf Club

Opening time Sunday – Thursday: 12pm – 12am
 Friday – Saturday: 12pm – 1am

 [Takapuna Surf Club](#)

 111 Hurstmere Road, Takapuna, Auckland

- As a new venture by the hospitality collective behind Queens Rooftop & Wineshop, Takapuna Surf Club — an all-day bar and eatery, sits perched above Takapuna Beach, with sweeping views and multiple spots to catch the day’s rays in the vibrant North Shore area, just 15 minute drive from Auckland’s city centre.
- The expansive eatery also features a dedicated games area, featuring pinball, arcade machines, and high-tech dart lanes. DJ set is available every Saturday and Sunday.



Eighty Fed

Opening time 06.30am-2.00pm daily



 68 Victoria Street West, Auckland Central

- Tucked on the corner of the vibrant entertainment precinct of SkyCity Auckland, Eighty Fed offers a welcoming café stop in the heart of the city. Perfect for visitors exploring the downtown area, it's a relaxed spot to pause between sightseeing, shopping, or catching a show nearby.
- Inside, the café delivers a modern, laid-back feel with a focus on quality coffee and fresh, approachable food. From barista-made espresso to eye-catching cabinet treats and light café fare, Eighty Fed is designed to fuel busy city days—whether that means a quick takeaway before heading out to explore or a leisurely sit-down break.



Return

Now open

Return

- 📍 165 Ponsonby Road, Ponsonby
 - Michelin Star Chef Matt Lambert opens Return
 - Return (on the site most recently occupied by Luke Dallow and Thane Kirby’s Gigi) has been described as “a more grown-up version” of The Musket Room. It will serve modern New Zealand cuisine including pāua, pavlova and a play on fish and chips, across an a la carte and two degustation menus (priced at \$165 and \$225 a head).
 - The restaurant’s main design features are a 16.2m-long swamp kauri countertop and a chocolate-brown travertine fireplace. Meanwhile, its logo features the tītī, or muttonbird – a migratory shearwater with homes in the Northern and Southern hemispheres.



Major Developments



Faradays Luxury Department Store

Opening July 2026

 [Faradays](#)

 131 Queen Street, Auckland Central

- The company has announced plans to open a large, multi-level department store on Queen Street in 2026.
- The new space will feature a wide range of categories, including womenswear, menswear, streetwear, childrenswear, beauty, fragrance, homeware, and accessories—showcasing both sought-after local and international brands alongside Faradays' own labels.
- Developers say the \$30 million project is designed to reimagine the multi-brand retail experience, creating a contemporary destination for shoppers.
- Plans revealed so far indicate the heritage-listed former Milne & Choyce building at 131 Queen Street will be transformed into a three-level, 3,000-square-metre retail space. The store is expected to include dining options, fashion and lifestyle offerings and even valet parking.



Auckland City Rail Link (CRL) - New Zealand's largest transport infrastructure project

Opening second half of 2026

 [City Rail Link](#)

 Auckland

- The City Rail Link (CRL) is New Zealand's largest-ever transport infrastructure project, featuring twin 3.45km underground rail tunnels connecting Waitemata (Britomart) and Maungawhau stations, with two new underground stations in Auckland's city centre.
- Set to open in 2026, CRL will significantly enhance Auckland's rail network by enabling faster, more frequent services, modernised stations, and longer electric trains, improving connectivity across the region.
- Construction is due for completion in mid 2026, followed by extensive system testing before Auckland Transport finalises routes and timetables ahead of the official opening.



New Zealand International Convention Centre (NZICC)

Now Open

 [New Zealand International Convention Centre](#)

 101 Hobson Street, Auckland Central

- NZICC is New Zealand's largest and most versatile events venue, located in the heart of Auckland's CBD and opening in February 2026. With a gross floor area of around 32,500 m², it delivers conference, exhibition and theatre capacity at scale.
- Flexible and configurable spaces: up to 33 simultaneous meeting rooms, a column-free exhibition hall hosting up to 3,150 delegates (or 4,500 guests for one-off events), and a theatre seating up to 2,850 people via retractable configurations.
- Seamlessly integrated into Auckland's innovation and hospitality precinct, featuring a glazed atrium and public laneway, direct airbridge access to major hotels, surrounded by dining, retail, galleries and near universities and business hubs—all within easy walking distance



Te Waharoa

Opening March 2027



[Port of Auckland](#)



[Te Waharoa International Cruise Terminal, Auckland Central](#)

- From March next year, Auckland will elevate its arrival experience, welcoming passengers from the world's largest cruise ships with a state-of-the-art international cruise precinct befitting a world-class destination.
- The project includes the new Bledisloe North wharf, enabling cruise ships carrying 4500-plus passengers to tie up at the visitor precinct, development of the Fergusson North wharf to handle bigger container vessels and associated dredging works.
- From the moment passengers step ashore, they'll feel the care, respect and manaaki that define Auckland's role as a globally connected city. The terminal streamlines every part of the arrival experience, moving travellers quickly (1500 per hour at peak times) and comfortably from ship to city so they can make the most of their time exploring the region.



Auckland Surf Park

Opening late 2027



[Auckland Surf Park](#)



1350 Dairy Flat Highway, Auckland

- Backed by Sir John Kirwan and local iwi, Auckland Surf Park is set to become the world's first heated artificial surfing in Dairy Flat, just 20 minutes from Auckland city centre.
- Over 400 homes, a vibrant town centre, and a members-only surf clubhouse to join the core surf lagoon, data centre, solar farm and eco-cabins, and lodging accommodation, restaurants and public outdoor amenities including walking and cycling trails.
- At its heart: a 56-module Wavegarden “Cove” lagoon, with heated surf (world's first) powered by excess heat from an on-site, solar-powered Spark data centre.
- Sustainable by design: regenerative stream restoration, native planting, rain-water harvesting, no single-use plastics—and the lagoon's year-round warmth from data-centre heat recycling.



The Symphony Centre

Opening 2028

 [The Symphony Centre](#)

 Auckland

- Positioned at the heart of midtown’s changing urbanscape will be a magnificent structure nestled between a station and a square - The Symphony Centre development.
- Located at the corner of Wellesley Street and Mayoral Drive, this mixed-use development will encompass residential, commercial, retail, and hospitality to create a dynamic cultural and lifestyle precinct that will reinvigorate Auckland’s Aotea Arts Quarter.
- Completion expected by 2028.



Auckland Airport Upgrades

Completion expected 2029



[Auckland Airport](#)



Ray Emery Drive, Māngere

- Construction of the integrated domestic and international operations under one roof is well underway with completion expected in 2029. Departing travellers will check in at the same hall and follow a unified path to the departure level on level 1, where their journeys will diverge. The co-located check-in hall allows efficiency by sharing infrastructure such as kiosks and automatic bag drop to speed up traveller check in, a new baggage handling system and improved building systems. The ground floor of the new terminal will house the arrivals hall and baggage reclaim belts for incoming domestic travellers.



Upcoming Events



For more event information, visit [Discover Auckland website](#).

Event	Event Dates
Forever Tomorrow : Chinese Art Now	02 May – 23 August 2026
Auckland Live Cabaret Festival	24 June – 05 July 2026
Matariki Festival	04 – 19 July 2026
All Blacks v Ireland at Eden Park	18 July 2026
Macbeth Auckland Theatre Company	28 July – 22 August 2026
World Series of Darts at Spark Arena	15 Aug 2026
New Zealand Fashion Week 2026	17 – 22 August 2026
Jason Derulo	27 September 2026
All Blacks v Australia at Eden Park	10 October 2026
Olivia Dean	17 October 2026
Hilary Duff	20 October 2026
5 Seconds of Summer : Everyone's a Star World Tour (Spark Arena)	24 October 2026
Zara Larsson – Midnight Sun Tour 2026	25 – 26 October 2026
Asia Pacific Amateur Championship (Te Arai Links)	29 October – 01 November
Runaway Auckland Marathon 2026	01 November 2026
Charlie Puth – Whatever’s Clever! World Tour	05 November 2026
Iron Maiden	07 November 2026
Joji	19 November 2026
Robbie Williams Concert (Eden Park)	24 November 2026
Dermot Kennedy	28 November 2026
Guns N’Roses World Tour 2026	17 December 2026
Foo Fighters – Take Cover Tour 2027	22 January 2027

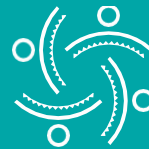
Fun Facts



In New Zealand's indigenous Māori language, Auckland is called Tāmaki Makaurau which means a 'place desired by many.'



Auckland's landscape is dotted with **53 volcanic cones**. The largest, youngest and most iconic is Rangitoto Island, which emerged from the water approximately 650 years ago.



Auckland is home to about **1.7 million people** – more than a third of New Zealand's population.



One of the few cities in the world bordered by **three harbours on two separate bodies of water** – The Pacific Ocean on the east coast and the Tasman Sea on the west coast.



Westhaven Marina, on the city's doorstep, is the **largest marina in the Southern Hemisphere**.



The Hauraki Gulf Marine Park encompasses an incredible area of **1.2 million hectares and more than 50 islands**. Many of them easily accessible by ferry from downtown Auckland, including Waiheke Island, Rangitoto Island and Tiritiri Matangi Island



Auckland is fortunate to enjoy one of the most diverse and unique music scenes in the world – so much so, that it's officially a **'UNESCO City Of Music'**.



Auckland isn't just one big downtown; it's made of villages like Ponsonby (trendy), Devonport (historic), and Newmarket (fashion). Each has its own distinct personality

Ngā mihi

Trade

Chris Hughes

Business Development Manager

Western Markets

Chris.Hughes@aucklandnz.com

[Auckland Tourism Trade Website](#)

[Auckland Image Library](#)

Trade

Yamile Hernandez

Business Development Manager

Eastern Markets

Yamile.Hernandez@aucklandnz.com



Trade sellers, sign up to

[Auckland Tourism Trade Facebook Group](#)

Media

Joanne Gourley

Communications Manager

Joanne.gourley@aucklandnz.com